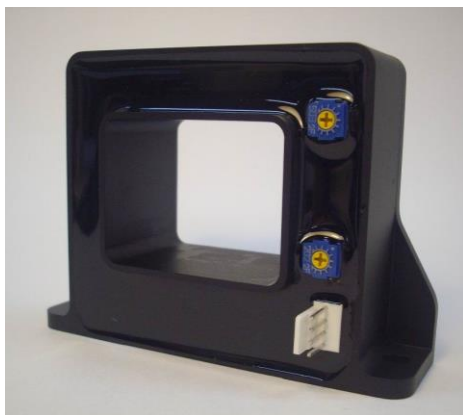


**CURRENT SENSORS FOR INDUSTRIAL APPLICATIONS****Model MOHT-B SERIES OPEN LOOP METHOD**

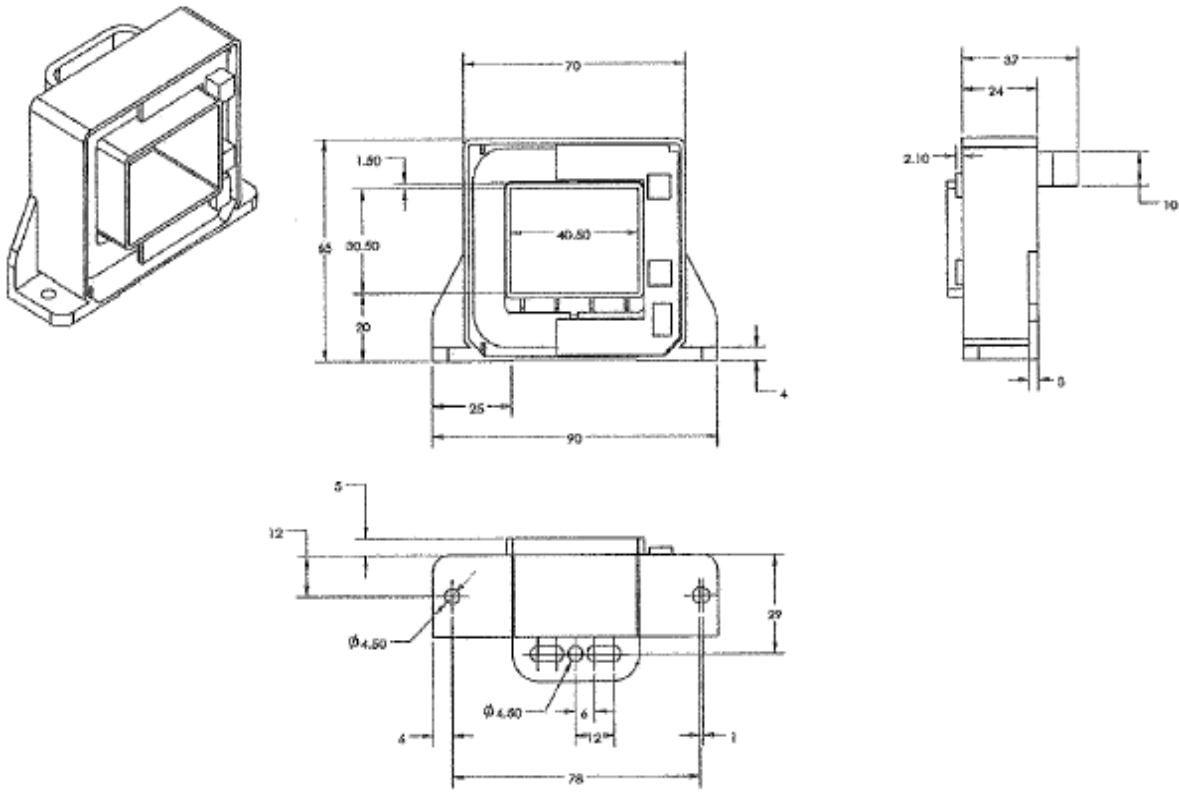
- Hall effect measurement for DC/AC/Pulsed current.
- For the use of UPS, batteries, switching power supply, DC motor drivers, etc.
- Wide Measuring Ranges (8 Models) up to  $\pm 2500\text{A}$  and Low Consumption Current



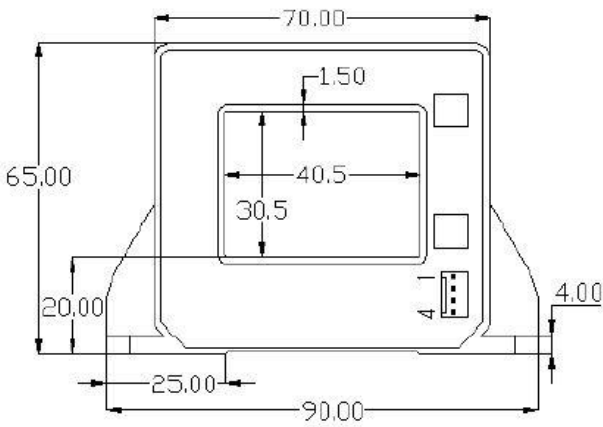
Model	Primary nominal current rms	Primary current measuring range
MOHT-200B	200A	$\pm 600\text{A}$
MOHT-400B	400A	$\pm 1200\text{A}$
MOHT-500B	500A	$\pm 1500\text{A}$
MOHT-600B	600A	$\pm 1800\text{A}$
MOHT-750B	750A	$\pm 2250\text{A}$
MOHT-800B	800A	$\pm 2400\text{A}$
MOHT-1000B	1000A	$\pm 2500\text{A}$
MOHT-1200B	1200A	$\pm 2500\text{A}$
MOHT-1500B	1500A	$\pm 2500\text{A}$

Output Voltage	: $\pm 4\text{V}$ (at Nominal Primary Current and $25^\circ\text{C}$ )
Current Consumption	: approx. 30mA
Power Supply Voltage	: $\pm 15\text{V}(\pm 5\%)$
Isolation Resistance	: $>1000\text{ M}\Omega@500\text{VDC}$
Accuracy	: less than $\pm 1\%$ of Nominal Primary Current
Temperature Drift	: less than $\pm 1\text{mV/K}$ and $\pm 1\%/K$ of reading
Response Time	: @90% of IPN step $< 5\ \mu\text{s}$
Operating Temperature	: $-40\sim+105^\circ\text{C}$
Storage Temperature	: $-40\sim+105^\circ\text{C}$
Safety Standard	: EN50178 and IEC61010-1 (RoHS compliant)
Basic Insulation	: Rated insulation voltage 1100V
Reinforced Insulation	: Rated insulation voltage 550V
Output Connector	: Molex 5045-04A
Weight	: approx. 300 g.

# Dimension and Drawing



# MOCH-B Series Connection



Connection of secondary  
Molex 5045-04A

